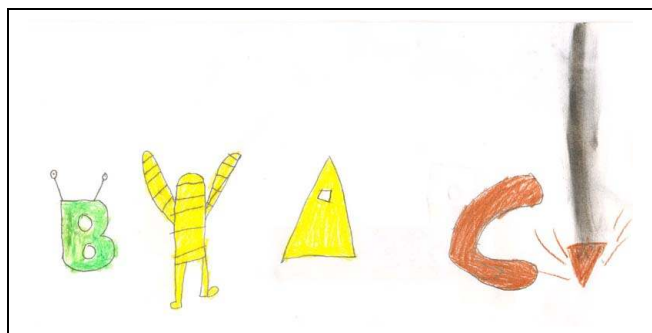
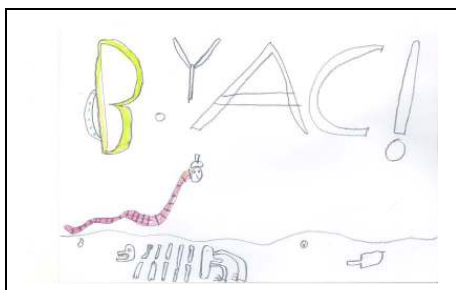
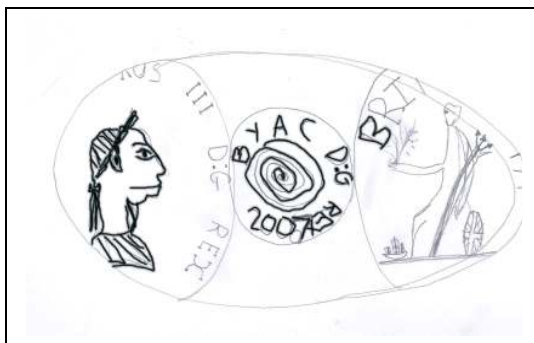




**Birmingham Young  
Archaeologists Club  
Summer Newsletter 2007**

Some of our fantastic new BYAC logos!



## BYAC Time Capsule



In April 2007 BYAC were approached by a housing developer to contribute to a time capsule that they were burying in Pegasus Court, Sutton Coldfield.

We supplied them with a trowel and lots of photos of activities that we had undertaken during the year.

We hope that it will give archaeologists of the future something to smile about when they dig it up - and something to show their YAC group!



# NATIONAL ARCHAEOLOGY WEEK

## 14 - 22 July - National Archaeology Week Events

Various events are taking place in the West Midlands - please note that these are not BYAC events and you will need to make your own arrangements for supervision of children.

14<sup>th</sup> July 'The Sun in Splendour' Step back into the medieval period at Weoley Castle Ruins, Alwold Road, Weoley Castle 1-4pm.

22<sup>nd</sup> July 'Down the Towpath of Time' Family fun day on the canals of Smethwick; meet Thomas Telford and James Brindley, and find out what it was like to live and work on the canals in the Victorian era. Take a trip on a narrow boat, or learn how to paint barge art in our Roses and Castle art workshops. Something for everyone! Galton Canal Heritage Centre, Brasshouse Lane, Smethwick 1-4pm.

## YAC News: YAC Leaders Weekend

Kirsty and Martin both went on the YAC Leaders weekend in Yorkshire. They had a great time, and have come back with lots of ideas to try out on you over the next year!



## BYAC Newsletter and Website

The next Newsletter will be our Autumn/Winter edition, and we'd love to have articles from you guys. So, if you visit any historical sites over the summer - either in this country or abroad - go on a YAC holiday, or find something interesting that you want to share then please send us a couple of lines and a photograph.

We also need info to update the website - what would you like to see? How can we improve it? Send us stuff!!!!

### Interpreting the Landscape

*When you are on holiday or on a day out keep your eyes peeled because there are often clues to the past hidden in the buildings and landscapes that you pass-by or visit.*

- 1. Look out for soil and rock layers - the geology is often exposed in motorway cuttings and this gives an idea as to what's underneath the vegetation. Is it chalky or coloured? Look out for other landmarks to help you navigate.*
- 2. Look out for boundaries - walls or hedges- what are they made of, why are they there?*
- 3. Spot the oldest buildings in a village or Town or City, can you notice any changes in materials, or changes in architectural styles over time?*
- 4. Look at place names, road names and field names often reveal the function of an area in times gone by...for example*
- 5. Look out for Roman Roads on maps - or other trackways from ancient times...and milestones at the side of lanes.*
- 6. Spot castles and battlefields - imagine the scene over 500 years ago! Are they on hills or flat land? Why?*
- 7. Look out for old churches - can you draw any of the interesting features? I like looking for carved stone or stained glass, animals, flowers and faces... I found a little wooden mouse carved in a bench in York Minster!*
- 8. Check out the water nearby - rivers, streams, lakes and springs all have great significance today and in the past were magical places!*
- 9. If you get to the coast check out the amazing features such as Lighthouses and sea walls - all protection from the sea - will they still be there in 100 years?*
- 10. Report your finds...large or small... back to us and we'll give you a fabulous prize...*

*Juliet Porter.*

### Awesome Archaeological Quick Quiz

(Information blatantly cribbed from 'Awesome Archaeology' Nick Arnold)

- 1 Which U.S. President was an Archaeologist?
- 2 'Necropolis' is Greek for what?
- 3 Where is the Temple of Karnak?
- 4 True or False – 'Bones in children have separate bone-tips'?
- 5 What does a Mass Spectrometer measure?
- 6 Name 2 Countries that have Archaeological finds in their Flags.

# WORD SEARCH

F	O	L	M	H	I	L	L	F	O	R	T	L	K	U	M	S	E	F	T	Y	I	F	S	P
I	K	A	T	P	I	R	C	S	D	N	A	S	C	N	E	A	R	A	M	S	U	O	N	T
N	M	U	T	T	X	C	T	U	M	U	L	I	W	J	D	P	M	O	E	I	K	R	O	Y
D	U	T	K	S	L	V	C	T	O	K	U	N	M	P	I	L	U	C	A	S	N	M		I
S	F	I	H	T	U	T	A	N	K	H	A	M	U	N	E	B	E	M	N	Y	O	A	R	N
W	B	R	T	O	J	Y	F	S	N	T	U	I	M	S	V	R	S	R	A	L	W	L	E	T
A	K	Y	Y	N	M	J	T	M	E	N	A	T	M	O	A	Y	U	S	I	A	P	D	C	E
S	Y	T	R	E	D	E	C	I	P	H	E	R	Y	I	L	C	M	L	Y	N	H	E	O	R
H	H	I	R	H	P	G	A	O	U	K	A	G	C	L	G	W	R	O	M	A	N	H	R	P
I	M	V	G	E	L	T	F	N	T	B	O	A	V	P	C	E	T	I	H	D	O	Y	D	R
N	C	I	U	N	M	R	E	V	R	L	A	Y	E	R	I	V	T	S	F	E	R	D	S	E
G	D	T	W	G	F	E	T	X	O	B	G	P	L	O	H	R	D	I	U	I	M	E	E	T
S	P	S	B	E	T	N	R	E	T	L	D	S	T	F	T	E	W	Q	L	Y	C	C	M	A
R	O	I	N	Q	T	C	A	L	T	E	W	N	O	I	I	S	V	V	B	O	N	E	N	T
Y	K	S	S	P	Y	H	O	L	I	W	S	K	U	L	L	N	N	J	U	E	R	T	R	I
U	T	E	W	X	C	P	G	K	P	O	O	C	H	E	O	O	F	L	I	O	J	P	G	O
P	G	R	M	R	U	O	N	Y	L	R	W	R	I	V	E	C	C	C	D	I	M	B	O	N
T	R	E	A	S	U	R	E	M	P	T	D	S	T	Q	N	S	S	E	D	O	R	R	O	C

ARCHAEOLOGY

STONEHENGE

DIG

POO

MUMMY

ARTEFACT

TREASURE

COPROLITE

FINDS WASHING

SKULL

RITUAL

ROT

TROWEL

DECIPHER

SANDSCRIPT

CONSERVE

LAYER

TUMULI

TRENCH

SACRIFICE

SOIL PROFILE

RESISTIVITY

NEOLITHIC

ERODE

TUTANKHAMUN

HILLFORT

MEDIEVAL

ROMAN

ANALYSIS

CORRODE

INTERPRETATION MUSEUM

FORMALDEHYDE

SCIENCE

RECORDS

**BYAC 2007  
Outline Programme**

July 14 <sup>th</sup>	Excavation in Warley Woods (BYAC special event for NAW)
August	Holiday
Sept 29 <sup>th</sup>	New Hall Valley Walk
Oct 27 <sup>th</sup>	Mexican Day of the Dead
Nov 17 <sup>th</sup>	Visit to Museum of the Jewellery Quarter
Dec 15 <sup>th</sup>	Christmas in the Trenches

Please note that this is an outline programme, and may be subject to slight change - please always check details of forthcoming events on our website at [www.byac.org.uk](http://www.byac.org.uk)

*Answers to the Quick Quiz*

- 1 Thomas Jefferson (1743-1826).
- 2 City of the Dead
- 3 Egypt
- 4 True
- 5 The number of carbon atoms in a sample.
- 6 Zimbabwe and Macedonia.

## BYAC Needs YOU!

**We are currently putting together ideas for next year's 2008 programme, and we need your help!**

**We want to know:**

- what sessions you enjoyed the most,
- what you would like to do more of in the future.
- if you've a burning desire to do something in particular

**Now is the time to have your say! So, please take time to fill in the questionnaire (overleaf) and either bring it along to the next meeting, or post it to Kirsty Nichol at Birmingham Archaeology, University of Birmingham, Edgbaston, Birmingham, B15 2TT or email [K.L.Nichol@bham.ac.uk](mailto:K.L.Nichol@bham.ac.uk)**

**Fanx and enjoy the summer! From 'The Management' xx**

**Name** .....

**Which Sessions did you enjoy most in 2007?** .....

.....

.....

.....

.....

**What would you like to do more of?** .....

.....

.....

.....

.....

.....

**Please return to Kirsty at Birmingham Archaeology, University of Birmingham, Edgbaston, Birmingham, B15 2TT. Or Email comments to [K.L.Nichol@bham.ac.uk](mailto:K.L.Nichol@bham.ac.uk)**