

# BYAC



Spring 2007

## YAC Visit to Selly Manor

By Jack & Rosie Smith & Ellie Holder

We visited Selly Manor and Minworth Greeves. These are a Medieval and a Tudor manor house.

In Tudor times when a person died their relatives would have to pay a tax on everything the person had owned. To decide how much they should pay the dead person's relatives and neighbours would come into their house and make a list of everything in it and what it was worth., this list is called an inventory.

We decided to make an inventory of all the furniture and other items in Selly Manor.

We split into groups to list all the belongings in the house, then we added up what they were all worth in old money (shillings and pennies).

EE

## News from our Recent Event at Birmingham University

When YACs get older they can join the Council for British Archaeology (some Parents may already be members if you joined YAC as a family). This is the main voluntary group for amateur archaeologists in Britain and many professional Archaeologists are members or are involved in local groups.

Every year they all get together at Birmingham University to swap their discoveries and keep up to date with what's going on in the West Midlands Region.

This year there were talks about what was found when Worcester High Street was dug up, Church effigies, the Portable Antiquities Scheme treasures, Coventry City excavations, Weobley Castle, Wednesbury discoveries and Community Archaeology by our very own Kirsty Nichol.

We had a little display and there was a lot of interest in Birmingham YAC. After Kirsty's talk Sutton Coldfield Local History Society donated £100 towards our activities!

John Hemingway told some funny stories about strange things that had happened to him while being an Archaeologist - like garden gnomes turning up in his trench at Dudley Castle and a Giraffe eating his woolly hat while surveying a zoo!

Well, all I can say is life is never dull if you have an interest in the past!

By Juliet Porter  
**BYAC Leader**



### Edwin's Finds!

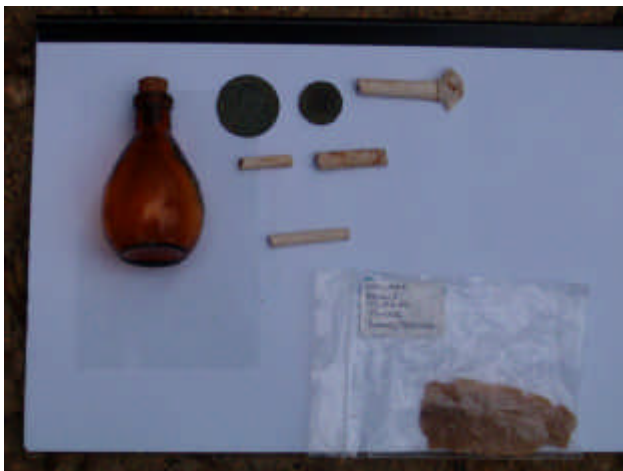
While digging in a mound created while adding new paths to a park in Birmingham Edwin uncovered several coins which date back to King George. He also found a thrupenny bit and a bottle. He reckons that there used to be a row of shops there - imagine losing that much money in those days!

This month at the Back to Backs Edwin showed us a piece of an ornate clay pipe with fine decoration on the bowl he had dug up. This adds to his other clay pipe pieces. In the olden days clay pipes were thrown away like cigarette butts are nowadays.

Edwin you will have to get in touch with the Portable Antiquities Scheme people soon as you have quite a haul now!

The most gruesome thing Edwin brought us was the bottle of Victorian hair...ugh! The Birmingham University Archaeologist's were intrigued!

?????



**Amazing fact:** When archaeologist's from the British Museum mapped the distribution of finds of Linch pin terminals (metal objects used to hold the wheels on Iron Age chariots) they found concentrations in Norfolk and the West Midlands.

Perhaps the boy racers of the day were crashing their chariots here!

**What could it be? Can you suggest a reason?**

## SNIPPETS

- Archaeologists at the **Saracen's Head King's Norton** reported that after excavations they had discovered the original house on the site had a different alignment to the current building.
- A Medieval coin hoard (38 coins) was found in a **Coventry** Car Park. It had been preserved under the floorboards of a house that had been bombed in the war and bulldozed.
- A rare **Medieval chess piece** was also found under the wall foundations of a 13<sup>th</sup> century house in Coventry.
- Stone effigies of Bishops in Churches often have indentations which once housed jewels which were often made of paste.
- **Worcester High street** showed remains dating back to the Romans and had been a road since then with a line of Timberframe shops in Medieval times.
- The Guild Hall in Worcester dated back to the 10<sup>th</sup> Century as one of the earliest Town Halls recorded.
- **Weobley Castle** showed the importance of a Castle for local area as village grew up to provide for the needs of the Castle and its inhabitants, and local resources were exploited to provide wealth and prosperity.
- Aerial photography suggested an Iron Age Enclosure was associated with Weobley Castle and archaeological evidence of 2 storey timber jettied buildings was uncovered in the Inner Bailey. *By Juliet Porter*



Alice Porter went on a YAC holiday and enjoyed visiting sites and digging up an Anglo-Saxon cow bone!

She made lots of new friends – look at YAC Website for this year's Holidays!



Legionnaires at the Festival for History August 2006 near Coventry run by English Heritage. YAC were there!

## Forthcoming Visits

<b>Saturday 21st April</b>	Archaeological Techniques at Birmingham Archaeology
<b>Saturday 26th May</b>	Churchill Mill
<b>Saturday 30th June</b>	Civil War session (location to be confirmed)
<b>Saturday 21st July</b>	National Archaeology Week with a Medieval Theme (Weoley Castle)
<b>Sunday 9th September</b>	New Hall Valley Walk
<b>Saturday 27th October</b>	Mexican Day of the Dead
<b>Saturday 17th November</b>	Museum of the Jewellery Quarter
<b>Saturday 29th December</b>	Christmas in the Trenches

Meeting times & locations will be published at [www.byac.org.uk](http://www.byac.org.uk)